

QUICKSTART GUIDE

RESCUE[®]

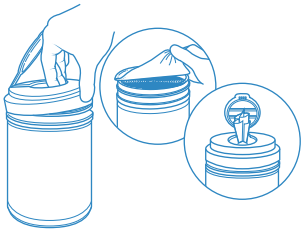
Rescue™ Wipes Contact Times

DAILY USE	BACTERICIDAL FUNGICIDAL	VIRUCIDAL	NON-FOOD CONTACT SURFACE SANITIZER
1 Min*	1 Min	1 Min*	10 Sec
Surface should be visibly wet for contact time.			

Rescue™ Wipes are excellent for daily use and outbreak situations. Rescue™ Wipes have fast contact times. Make sure that the surface is visibly wet for the entire contact time.

For more information on a specific organism, use the **Pathogen Claim Tool** on the Rescue™ Wipes page at www.LearnAboutRescue.com.

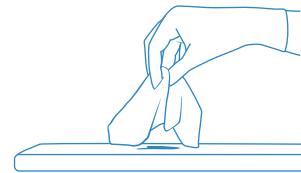
How to Use Rescue™ Wipes



STEP 1

Remove lid

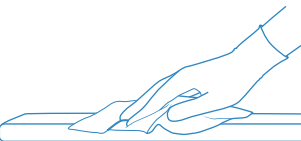
Remove the seal for the 6x7 canisters, or cut-off the top of the refill plastic bag for the 11x12 bucket wipes. Pull towelette through the X opening on the lid and then replace the lid.



STEP 2

Pre-clean heavily soiled areas

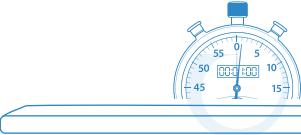
Remove visible soil and pre-clean the area by working from the least contaminated area to the most contaminated area or from the outside to the inside.



STEP 3

Apply Rescue™ Wipes to the surface

Wipe the entire surface area hard, making sure the surface area is visibly wet. Wettability and surface coverage are equally as important to ensure disinfection can be achieved in one application.



STEP 4

Allow surface to remain visibly wet for 1 minute*

In order for disinfectants to be effective they must remain wet on the surface for their entire contact time. Be sure to follow the proper contact time for specific pathogens.

STEP 5

Wipe surface dry or allow to air dry

Use a damp, clean cloth to dry small areas, or allow to air dry.

Success & Troubleshooting Tips

Close the Lid.

Rescue™ Wipes have a shelf life of 2 years. Make the most of that time by remembering to close the lid after each time you pull a towelette.

Wear Gloves

In accordance with the SDS (Safety Data Sheet) Rescue Disinfectant Wipes do not carry any hazard statements or hazard pictograms, and do not require the use of personal protective equipment (PPE) when handling the product. We do still recommend the use of gloves as a general practice when disinfecting, to help minimize the risk of disease transmission.

Rinse Your Gloves.

You may detect a rotten egg smell when wearing gloves. The odor is a reaction between sulfur residue on the gloves and hydrogen peroxide in Rescue™. You can:

- Continue to use the gloves
- Switch to a different kind of glove or
- Rinse the surface of the gloves with water before using

Wait Before Wiping Dry.

Always follow the required contact time when disinfecting a surface for a particular pathogen. Consider setting a timer and walking away until the timer goes off.

To refill Rescue™ Wipes bucket

1 Open empty bucket and remove empty plastic bag.



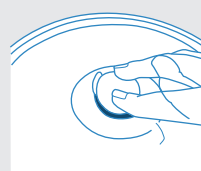
2 Put refill bag into the bucket and cut the top off.



3 Pull wipe through hole in top of lid.



4 Make sure the lid is closed so wipes stay moist.



For more information visit:
Rescuedisinfectants.com

Virox Animal Health
2770 Coventry Road
Oakville, ON L6H 6R1 CANADA
Toll Free: 1-800-387-7578



*Use a 5 minute contact time for Canine Parvovirus.
© 2020 Virox Technologies Inc.